

TOMAHAWK LAKE

Association, Inc.

Lake life in the Northwoods

Hazelhurst • Lake Tomahawk • Minocqua • Woodruff

President's Letter

by Noah Lottig, PhD, TLA President



Dear TLA Members, Friends and Families,

I hope this letter finds you well and remembering all the great memories you made on Tomahawk Lake this past year. I know that all of you will agree that Tomahawk Lake is one of the most beautiful bodies of water in the Northwoods. For over a hundred years, it has been a haven for families to gather together during the summer while enjoying the splendor of Tomahawk's clear and unspoiled waters. Many of us have grown up on the lake, and most of us have taught our children—and their children—about nature, boating, and overall water safety, while sustaining ourselves in the serenity of this virtual paradise.

Life on the lake seems so natural that it's easy to take it for granted. We have returned each year to find it as the same remarkable natural resource we have always known it to be. But we are now living in a rapidly changing world, and this has impacted our lake through the introduction of Eurasian Water Milfoil (EWM). While the Tomahawk Lake Association (TLA) is focused on all aspects of the health of the Tomahawk Lake system, I am going to focus on EWM because I know that it is a major concern for many of our residents around the lake.

Prevention Efforts

Aquatic invasive species often cause significant negative impacts in lakes, streams, and wetland. Mitigating these impacts are extremely costly and emphasize the importance of prevention. As a result, we have stationed **Clean Boats Clean Waters** (CBCW) personnel at our boat landings to educate people on the importance of prevention all summer long. Can you imagine if zebra mussels or other invaders got into our lake? In order to increase our prevention efforts, we plan to have our CBCW personnel monitor our landings even more next year and are exploring other ways to prevent the next invader from getting into this incredible lake we love so much.

(Continued on page 2)

See page 4 "Take the Lake Steward Pledge" and page 7 the "Kris & Jon Hunt Success Story" as two examples!

GO ONLINE TODAY TO DONATE

www.tomahawklake.org

DEDICATED TO TOMAHAWK LAKE

The Tomahawk Lake Association is the only resource dedicated exclusively to Tomahawk Lake. This does not mean that the issues we address necessarily are unique to our lake, but they are of high concern to those who care about the lake. Tomahawk Lake unites us as an "interest group," and therefore gives us greater capacity to have an impact on our shared concerns through our combined efforts, and financial resources.

SIGN UP ONLINE FOR E-NEWSLETTER

www.tomahawklake.org

New Membership Tiers and TLA's "Double Down" Challenge for 2022

As our challenges mount in our fight against EWM, so does the cost to control it as effectively as possible. As our President mentioned in his letter to the left, your Board of Directors will be seeking higher levels of financial support from our members, friends and family of members who enjoy our lake as well as support from local businesses in 2022 and beyond.

We will be moving away from the concept of "Fair Share" since it is an outdated term that was created more than 10 years ago. The original intent of fair share was to have members fund the difference between our overall costs to operate the association and the funding we

(Continued on page 9)



Join our Facebook page at:
www.facebook.com/groups/104527072922/

info@laketomahawk.org | www.tomahawklake.org

Tomahawk Lake Association
P.O. Box 535
Minocqua, WI 54548

President's Letter

(Continued from page 1)

Attacking EWM

For the past several years, EWM densities have increased as we transitioned away from using 2-4-D, the herbicide that we have historically used to chemically treat EWM. 2-4-D is no longer an option in Tomahawk Lake for treating EWM because the negative effects of this chemical are more significant than the negative effects of EWM. This year, Onterra, LLC, a lake management consulting firm that TLA now uses, following our Executive Director's retirement last year, mapped EWM in the entire Tomahawk Lake system and found about 125 acres of dense EWM. This is similar to what Ned Greedy, our former Executive Director, mapped in 2020 and nearly identical to the amount of dense EWM that we chemically treated in 2012. Although it may feel like the lake is the "worst we have ever seen" this year, the amount of dense EWM across the entire system is consistent with high EWM densities going back to almost a decade ago.

This year, we undertook our most aggressive efforts ever using harvesting (weed cutting and the DASH – Diver Assisted Suction Harvesting – *formerly known as the Hydralulic Conveyor System*) as a lake-wide tool to manage EWM. Not surprisingly, we had some great successes, but we also fell short in some areas. In the end, we learned a lot and will be much better informed as we explore using harvesting to assist in managing the negative impacts of EWM on Tomahawk Lake.

Five-year Plan & the Use of Chemicals

We are currently working with Onterra to update our comprehensive lake management plan with the Wisconsin Department of Natural Resources (DNR) to guide our management decisions over the next five years with respect to EWM. As part of

this process, we sent a survey to all Tomahawk Lake property owners. Please take the time to provide your feedback about how you use the lake. We are also forming a committee to draft this five-year plan with Onterra. We will explore all options for managing EWM, including the use of chemicals and approaches for applying chemicals that may increase their effectiveness in a lake like ours. If you are interested in joining the management plan committee, send an email to lakehealth@tomahawklake.org. We will then hold a Spring 2022 meeting to gather feedback on the management plan.

In the meantime, the TLA Board of Directors had to make decisions about managing EWM in 2022 prior to the five-year plan being completed. Since 2-4-D is no longer a feasible option and we do not have another chemical approved (*our trials of ProcellaCor and AquaStrike were approved for experimental purposes but failed*), we decided to continue providing recreational relief through whole-lake harvesting in 2022.

Harvesting will also be a part of our management plan in 2023 but, because our management plan will be completed by then, we will be able to make more informed decisions regarding the use of chemicals as an additional management tool in the future as well. Depending on the planning process outcomes, I anticipate that we may conduct another trial of ProcellaCor to see if the prior failure was a fluke or if it's a viable option for some areas in our lake.

"Dock In – Dock Out" Strategy

In September 2021, we received a proposal from Aquatic Plant

Management LLC (APM) to help us manage EWM over the next two years using **Diver Assisted Suction Harvesting (DASH)** and **mechanical harvesting** (the weed cutting barge). Based on data from Onterra, APM determined that it would take approximately 90 days to DASH the EWM from around docks and boat lifts ("Dock-In") and an additional 40 days to harvest with a weed cutter the large areas of EWM near residential properties away from docks ("Dock-Out").

On average, the cost to complete the "Dock-In" management is \$1,100 per property. (Service previously done by TLA DASH boats.) The TLA Board and lake association members who attended the September meeting determined that it would be financially impossible for the TLA to fund "dock in" management of EWM. TLA's DASH boats will no longer remove EWM around docks. This was based on the fact that less than 60% of residents around Tomahawk Lake have contributed with an average contribution less than \$400.

As a result, the TLA has committed to funding the removal of dense EWM in the shared "Dock-Out" areas of the lake. Focusing our

Watch the video of APM's presentation on our website:
www.tomahawklake.org

efforts in "Dock-Out" areas will also free up resources for us to manage EWM in other recreationally important areas such as Eagle Bay. **Individual property owners will be responsible for managing EWM around their private docks.**

TLA has signed a two-year harvesting agreement with APM. In return, APM is purchasing a state-of-the-art weed cutter harvester. This one is larger than the one used

this year and has enhanced cutting heads that should substantially reduce fragments. TLA will also operate one of our DASH boats to help with fragmentation cleanup. The contract has flexible start dates so the harvester can begin shortly after ice-out. We are budgeting for 90 days of harvesting that will allow for an early season harvest and a late season harvest to maintain recreational access throughout the entire summer.

In summary, the 2022 harvesting effort is more robust than in 2021

as it includes nearly 300% increase in harvesting days, flexible start dates, a new harvesting boat that can cut more EWM and leaves less fragmentation floating in the water, and as mentioned earlier, we are prepared to pick up floating fragments/debris via our DASH boat, if needed. Aesthetically, in these areas, we should see substantial reductions in EWM

See page 9
"What exactly is a weed razor?"

floating on top of the water and from a recreational

perspective, EWM will be cut low enough that it won't interfere with recreational activities in most areas of the lake. Additionally, our goal reduces the biomass of EWM, freeing up space for native plants to grow and hopefully outcompete the invasive EWM.

If you have dense EWM or aquatic plants around your dock, boat lift, or swim raft, you have two options.

The **first option** is using a weed razor (DIY) to cut the plants. I use this approach around our dock, and it is extremely effective especially if you cut early in the season and periodically throughout the season. The **second option** is to hire Aquatic Plant Management (APM). They will be

offering a substantial discount to TLA members for their divers to use a DASH boat to remove aquatic plants around docks. More information will be provided shortly about their service so that you can get on APM's schedule early (likely before ice-out) to guarantee service before the end of the summer.

Learn about APM at
www.aquaticplantmanagement.com

Increased Member Contributions Needed

Finally, TLA is increasingly being asked to carry the costs of managing EWM on Tomahawk Lake. We have applied for a large DNR grant to help support our activities, but these grants are not guaranteed. My understanding is that the total requests for grants to manage invasive plants is more than five times the amount of available funds in 2022. Even if we get the DNR grants, we face a significant shortfall (greater than \$40,000) next year if our membership contributions stay at a similar level.

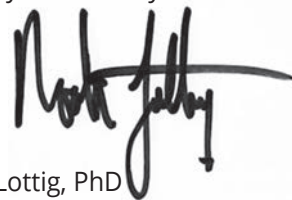
The greatest challenge the TLA faces now is raising the funds necessary to effectively manage EWM in Tomahawk Lake.

Our ability to be the most effective is directly related to the amount of support we receive from each of you. As the cost to manage the lake increases, we are asking each of you to **"Double Down"** in support of TLA's efforts. Our family has made the commitment, but has also

Look over the "2022 Preliminary Budget" on page 8.

increased our 2021 contributions. If we want to effectively manage EWM, we all need to "Double Down." If we don't, TLA will be trying to fight EWM with our hands tied behind our backs and limit what we will be able to accomplish together. If you have not joined TLA yet, please consider joining and supporting our continued efforts to preserve and protect this incredible resource. TLA is a 501c(3) organization and there will be a membership form in this newsletter to join or increase your 2021 contributions. We also have options for contributing online as well at www.tomahawklake.org.

Thank you for your continued support of TLA and I look forward to seeing you all next year.



Noah Lottig, PhD
TLA President
218-310-7460
info@tomahawklake.org

See the New Membership tiers and 2022 challenge article on page 1.



Join our Facebook page at:
<https://www.facebook.com/groups/104527072922/>

www.tomahawklake.org



TAKE THE PLEDGE – BECOME A LAKE STEWARD

It's not someone else's responsibility to preserve the health of our beloved Tomahawk Lake – it's yours, and its mine. So, to keep the water in Tomahawk Lake clean for generations to come, all we ask is that our fellow Tomahawk Lake property owners join us in taking the "Lake Steward Pledge."

To take The Pledge, simply review and implement the five easy-to-follow action steps listed below and tell us when you do so. We'll feature your name in our TLA newsletter and on our website. You'll also receive a digital copy of *Shoreline Magazine*, along with a copy of Wisconsin shoreland survey, both of which will help you understand and execute additional healthy lake habits and shoreline practices.

By taking The Pledge, you're committing to take small steps on your property that make a BIG difference on our lake!

How to Care From Home...

5 STEPS YOU CAN TAKE TO PROTECT TOMAHAWK LAKE

Traditional lake landscaping practices – seawalls, removal of aquatic plants, large expanses of lawn, and blazing down all the trees lining the shore – are harming many Midwestern lakes. While the ordered beauty of a flawless yard has its appeal, it's crucial to remember that lakes are living systems. They need clean water and a leafy shoreline edge with aquatic plants and trees to foster a well-functioning ecosystem. Tomahawk Lake is no different and—if we all do our part—it will remain pristine for years to come.

Our five action steps focus largely on preventing or minimizing what is called "water run off" from entering the lake. This is vital because whatever we do on land, ends up in our water. I will state this again given its importance, ***whatever we do on land, ends up in our water.*** Ideally, we want to capture any water runoff (like rainwater or snow melt) before it reaches the lake. If we can't capture this water, we should ensure that it's free of chemicals, fertilizer and things like rock salt (used in the winter months). It probably comes as no surprise that the living things in our lake don't do well on a poison induced or high salt diet!

1. CAPTURE WATER RUNOFF BEFORE IT REACHES THE LAKE

Ideally, property owners capture water runoff before it reaches the lake. This is known as diversion, rock infiltration and rain garden practices. Diversion, rock infiltration and rain garden practices move water to areas where it can soak into the ground vs reaching, and ultimately polluting, the lake. The types of diversion practices you choose depend on your property. It's estimated that during a rainstorm, an average sized roof can collect six hundred gallons of water. As such, another method to capture water runoff is by placing a barrel at the end of your rain gutters, as featured below. As an added bonus, the water captured can be used for watering lawns and gardens, thus conserving water overall.

In the months ahead, on the TLA website, we'll identify additional diversion and infiltration practices for Tomahawk Lake property owners. Please note that multiple diversion and infiltration practices may be necessary at your home. In taking the Pledge, we ask that you commit to at least two diversion and infiltration practices to capture water runoff on your property.



A rain barrel is placed below a rain gutter to capture water runoff from the residence.



Planted in a low area, this rain garden helps catch water runoff.



Native gardens follow these shorelines at residences on a Midwestern Lake; shorelines can be aesthetically pleasing while also protecting the shoreline and quality of the water.



Shorelines left natural help prevent erosion and filters water runoff before it reaches the lake.

2. ESTABLISH A “NO MOW” AREA OR PLANT A NATIVE GARDEN

The easiest and least expensive way to filter water runoff is to leave your shoreline natural and/or establish what is called a “no mow” area between your land and the water. As such, do not mow to the edge of where your property meets the lake, but leave an area that is natural. The Wisconsin DNR recommends leaving a minimum ten foot buffer between your lawn and lake, but if the minimum ten foot is not possible, try to start with several feet of no mow area. Or, if you like color, plant a garden full of beautiful native wildflowers. This section of land helps to act as a natural buffer, catching and filtering water runoff that wasn’t captured upland near your house. We’ll update the TLA website with a listing of native wildflowers and a guide to help you plant.

Given how easy it is to implement this filtration practice, we are asking all Tomahawk Lake property owners to leave at least a section of their shoreline natural, either with a several foot no mow area or native garden. *NOTE: per action step #1 above, establishing a no mow area or planting a native garden count as one of the two diversion and infiltration practices we are asking Tomahawk Lake property owners to implement.*

3. MINIMIZE CHEMICAL AND FERTILIZER USE

While it’s probably obvious that chemicals, like ant poison applied to an ant hill in your yard, are toxic for our lake, it’s important to note that things like fertilizer and grass clippings can cause just as much damage. Action step #3 is to minimize chemicals and fertilizer used on your yard, which means more time for you to relax on the dock – a win win! If you must add fertilizer to your yard, make sure the middle number on the front of the bag (representing phosphorus or Nitrogen-Phosphorus-Potassium) is ZERO. Even this no-phosphorus formulation should be used cautiously as excess Nitrogen, when washed into the lake, can cause excessive aquatic plant growth and decrease water quality. Insecticides and pesticides kill pollinators and birds, so cease using these too.

4. MAINTAIN YOUR SEPTIC SYSTEM

Septic seepage can also run into the lake under the ground. This waste acts like fertilizer, so it too will cause an increase in weeds and algae. Have your septic system inspected every three years by a professional, and this year, if you don’t recall the last time someone paid you a visit, please schedule an inspection.

5. ALLOW NATIVE AQUATIC PLANTS AND FALLEN WOOD TO REMAIN IN THE LAKE

Action step #5 is another simple, no cost, effective way to better the health of our lake: allow native aquatic plants and fallen wood/trees to remain in the lake. Tree roots and the natural grasses/flowers preserve the shoreline by



Fallen Trees help keep shorelines intact and act as a feeding, eating and nesting areas for fish & critters.

holding it in place, ultimately slowing down or preventing erosion. Leaving trees along your shoreline also provides the added benefit of privacy. Lastly, aquatic plants and wood, like fallen trees or branches, should remain in the lake. Below the water, this wood acts as feeding, breeding, and nesting areas for all sorts of critters – from fish to songbirds. Above the water, ducks, geese, turtles and other creatures use the wood to sun themselves.

In closing, thank you! We are a community. We lean on and support each other, and we need to continue to care for our lake together. Implement the five action steps listed above

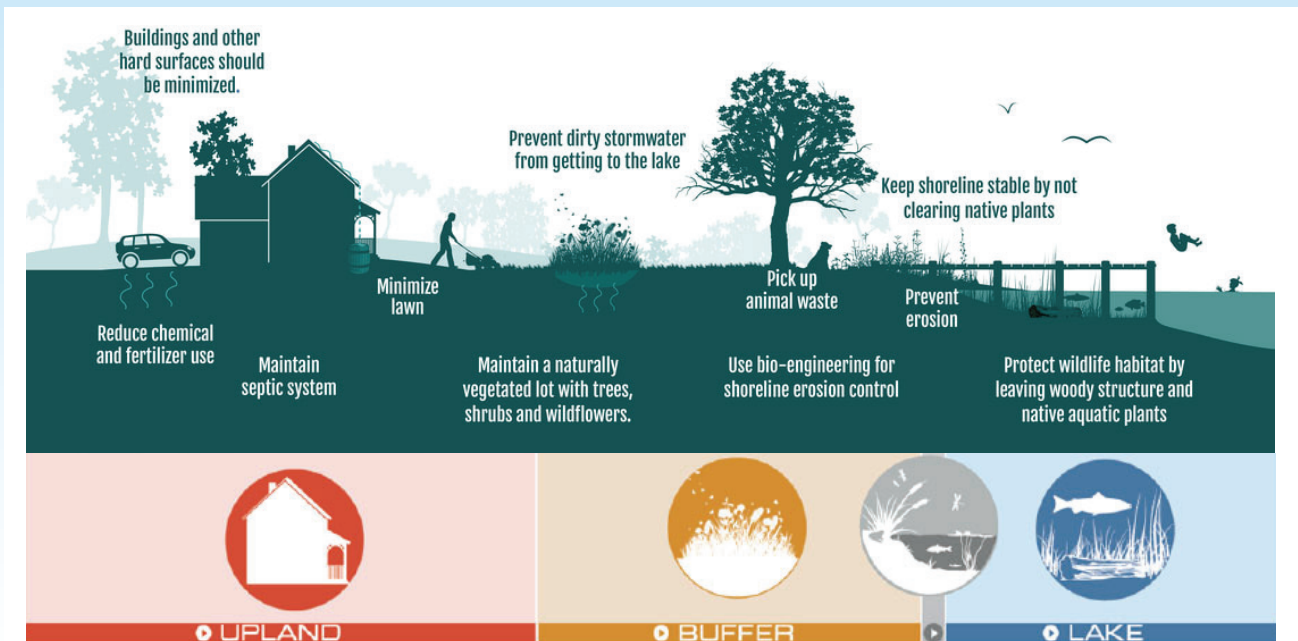
(Continued on next page)

LAKE STEWARD PLEDGE

(Lake Steward Pledge continued from previous page)

and feel good about making a difference to the health of our lake. As my husband says, "What could be more important than leaving our kids a clean planet?"

We want to hear from you! Please send us a photo(s) or tell us a bit about the action steps you implemented. No action or project is too small. Remember, even the small steps make a big difference. Send emails to tessmallery@yahoo.com or text (773) 564-6424.



Margo's Minocqua Minute

NEWS ABOUT TOWN

NOVEMBER 1, 2021

- **Packerland Plus** is for sale and rumor today has it being sold.
- **Polecat & Lace Restaurant** has been sold
- **Debby's Farmers Market** is for sale.
- **Stingrays Supper Club**, as you may know, burned this past summer and it will not be rebuilt.
- **The Edge**, on Hwy. Y, was sold and is now being run under the new name of **Pickles**.
- **What's going to happen to Paul Bunyan's?** The rumor mill has been busy. Will it be torn down to make way for more condominiums or will it reopen next summer under the same management. Will they put in a satellite location as a drive-up bakery? No one seems to know for sure. What would you prefer?
- **Tula's Cafe** has reopened.

- **Trig's Floral Shop** has moved to the interior of the grocery store. The coffee shop is in the same location, but is now a Caribou Coffee shop.
- **Two new boutiques** have opened on Milwaukee Street, **Isabella Boutique** and **Isla**.
- Many locations, stores and restaurants, have modified their open days of operation as well as hours of operation due to lack of employees. Please check before heading out to your favorite spot.

Please buy local whenever you can to keep our merchants in business!



Take the Lake Steward Pledge

The Kris & Jon Hunt Success Story

Shoreland erosion is a problem for both the property owner and the lake. *The sediment, resulting from erosion negatively affects the lake's health by:*

1. Covering or removing aquatic plants and bottom habitat required for fish spawning and feeding.
2. Carrying nutrients and other pollutants contained in the soil to the lake. One of the most serious threats is phosphorus, a natural fertilizer which becomes attached to soil particles and is carried into lakes by runoff. Excess phosphorus within the lake will cause detrimental algal blooms, which can negatively affect water quality.
3. Causing the water to become cloudy. Loss of water clarity makes feeding difficult for the fish and shoreland wildlife that rely on sight for finding their food and of course, us humans prefer a clear vs. cloudy lake too!

Here is Kris & Jon Hunt's story of how they addressed soil erosion on their property.

Kris and Jon Hunt traveled up to the Northwoods many times over the years before buying their place on Tomahawk Lake in 2004, including visiting with college friends on Lake Katherine and Tomahawk Lake since the mid-seventys. In 2003 and 2004, they rented a cute cabin on the point in Pottawattomie Colony across from Hermit Island which cemented their love for the lake. They enjoy their time boating on the lake, although it's now more relaxation on the pontoon boat rather than exercise behind the ski boat. Their three adult children enjoy spending time up here, coming from the Chicago area, and the four grandchildren (ages four and under) are just beginning to get acclimated to Tomahawk Lake. Both Jon and Kris have been active TLA members, with Kris in particular serving



Erosion plagued the steep slope down to the water's edge.

After conferring with Brent Hanson of Hanson's Garden Village in Rhinelander late in the summer of 2020, they agreed to proceed with the project this year. They worked primarily with Brent to design and supervise the project and Pat Anderson of Integrity Landscaping and Green Lawn both participated in the effort. The project involved the



EnviroLok bags were placed on the eroded slope and native shrubs, wildflowers, grasses and groundcovers were planted in between the bags, where they will root and stabilize the ground.

on the TLA board for 13 years. They cherish all the friendships they've built through the TLA and its social and environmental activities.

The Hunts live on the north shore of the lake, just east of Indian Shores campground. When they purchased their property, they knew that there was a challenge posed by the steepness of their hillside down to the lake. The slope of the hill, beginning about thirty feet south of their home towards the lake, is 45 degrees and the soil is very sandy and loose. They took some early action to help manage those risks by installing in-ground steps and vegetation along the hillside. Over the years, worry about erosion has grown as has concern about the risk of nutrients draining into the lake. In addition to protecting the lake, they admit to being driven by the desire to enhance the value of their property.

delivery and installation of about 250 EnviroLok bags, several irrigation lines (the hillside has southwest exposure) and the planting of 550 native shrubs, wildflowers, grasses, groundcovers, and sedges in between the bags.

A sampling of the plants inserted between the bags includes:

Bearberry, Sweet Fern, Snowberry, Dwarf Bush Honeysuckle, Thimbleberry, Rock Clematis, Penn sedge, Plains Oval sedge, Little Bluestem grass, Switchgrass, Big Leaf aster, Frost aster, Harebells, Gray goldenrod, Wild Beebalm and Wild Strawberries. The total project also included the installation of some misting irrigation, perennials, and grass seed near the top of that steep slope to retain water runoff and avoid erosion down the slope.

Although young now, the expectation is that these perennials will take

(Continued on next page)

firm root within the bags and conceal the bags, with the rooting systems further strengthening the hillside and protecting against erosion. You can learn more about the EnviroLok system by checking out the company's website: <https://www.envirolok.com/the-envirolok-system/>

We congratulate the Hunts

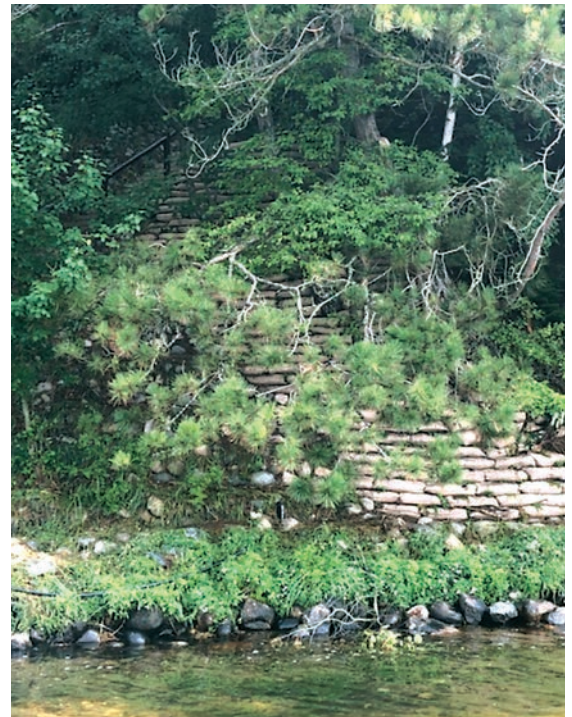
for being a Tomahawk Lake Association, Lake Steward. Through their shoreland project they have implemented the following Lake Steward simple steps to protect and preserve the health of the Tomahawk Lake System:

1. *Capture Water Runoff*
2. *Establish a No Mow Area or Plant a Native Garden*

All shoreland owners do not have the slope conditions to contend with as did Kris and Jon Hunt but, we all as shoreland property owners do have the responsibility to preserve the health of the Tomahawk Lake.

Take the Lake Steward Pledge go to:
www.tomahawklake.org/steward/take-the-pledge-become-a-lake-steward/

The finished project. Boat by this summer and check it out!.



These lake families have become Lake Stewards!

Anderson Family	Bruce & Shelia Forsberg	Carl Kwak & Casey Ladowski	Paulsen Family
Tom & Carol Beech	Robert Guisinger	Ryan & Denise Mallery	Pattie Paulsen
David & Trish Burbie	@ Hill Top Condos	Tess Mallery & Matt Hankins	Paul & Suzy Shain
Combs Family	Bob & Leslie Hertz	Tuck Mallery	Art & Kay Sonneland
Jeff & Birgit Dierberg	Jim & Kathy Kavemeier	Alan & Margo Oppenheim	Mark Witte

Tomahawk Lake Association Annual Operating Budget Comparison 2021 vs. 2022

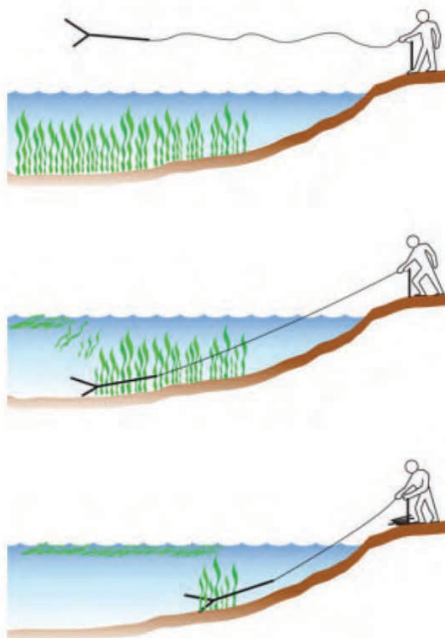
	2021 Budget	2021 Forecast	2022 Budget	
Income				
Town Revenue	\$ 30,000	\$ 30,000	\$ 30,000	
Grant Revenue	\$ 28,275	\$ 26,655	\$ 84,065	<i>Includes \$75,000 in a pending DNR grant.</i>
Membership Dues	\$ 80,000	\$ 82,000	\$ 100,000	
Event Income	\$ 10,600	\$ 17,506	\$ 15,000	
Misc. Income	\$ 1,850	\$ 5,000	\$ 4,935	
Total Income	\$ 150,725	\$ 161,161	\$ 234,000	
Expenses				
AIS Mgmt & Control	\$ 44,844	\$ 40,000	\$ 33,000	
Harvesting Contractor	\$ 40,306	\$ 75,900	\$ 180,000	
Payroll Expenses	\$ 35,300	\$ 34,000	\$ 35,000	
Member Communication	\$ 9,675	\$ 10,000	\$ 10,000	
Event Expenses	\$ 6,200	\$ 6,500	\$ 6,000	
Shoreland Stewardship	\$ 6,200	\$ 3,500	\$ 3,000	
General Operations	\$ 4,700	\$ 4,700	\$ 4,500	
Contract Services	\$ 3,500	\$ 3,500	\$ 3,500	
Total Expenses	\$ 150,725	\$ 178,100	\$ 275,000	<i>It will be a greater shortfall if the \$75,000 DNR grant is unsuccessful, resulting then in a \$116,000 shortfall.</i>
Shortfall		\$ (16,939)	\$ (41,000)	

What exactly is a weed razor?

A weed razor is a helpful tool to use around docks and shorelines to clear away weeds. The outside edges of the "Y" are sharp, about 30" long razor blades.

Weed razors are available at a variety of sites online. Just google "weed razor."

Diagram of how the weed razor is used.



Man preparing to throw out the weed razor.

To order online:
www.weedersdigest.com/aquatic-weed-cutters

Items in weed razor package.



yellow blade covers for storing

New Membership Tiers and "Double Down" Challenge

(Continued from page 1)

received from the DNR and town governments. Unfortunately, DNR funding has decreased, township budgets are very tight, and thus more burden to truly do a good job of managing our lake falls upon our TLA members.

As a result, we will be introducing new membership tiers with higher contribution levels for each tier. With our budget nearly doubling in 2022 to harvest EWM in a significantly more effective manner, we will be asking you to consider "DOUBLING DOWN" your investment to fight EWM and make as much of your lake as recreational accessible as possible! **Thank you!**

THANK YOU from your TLA Membership Committee

What a terrific summer it was on Tomahawk Lake. As the leaves are falling and winter approaches, we say THANK YOU to all our TLA members! In another year with limited DNR grant funding, you stepped up and supported your lake association. Your membership dues and other contributions allowed us to continue our effort to staff our boat ramps, dive boat and harvesting equipment with personnel focused on managing and controlling Eurasian Water Milfoil (EWM).

We are all so blessed with an Outstanding Resource Water to enjoy with family and friends in the Northwoods. We are equally as blessed with caring members like you who, year after year, generously support your lake association to allow us to collectively do everything we can to protect it for future generations.

If you have not had a chance to renew your membership or you would like to join the TLA, a 2021 membership form is included with this newsletter.

Thank you for your continued support and we wish you and your family and friends a safe and healthy winter season.

Sincerely,

Kate Arias Jake Harmsen Adam Redman
Bruce Forsberg Josh Ridders

Thank You to our TLA Members!

List includes all membership contributions received as of September 30, 2021

Fair Share Platinum \$500 & Above

Albee, Alan
Andersen, James
Anderson, Tom & Pam
Arias, Gil & Kate
Bartling, Peter & Lynn
Beech, Tom & Carol
Boles, Sarah
Clearwater Camp Foundation
Cotherman, Scott & Jinny
Daly, Pat & Kathy
Dell, JD & Ann
Donner, Keith & Gail
Fites, Donald & Joyce
Foster, Race & Lynne
Fox, Anthony
Francois, Joseph & Penny
Frost, Jack & Delores
Gauchel, Peter & Brenda
Gauerke, Scott & Pam
Gerdin, Michael & Nicole
Goltermann Jr., Louis
Goltermann, John
Griffin, John & Kim
Gustke, Boyd
Hankins, Tess Mallery & Matt
Hanson, Mark
Harmsen, Scott & Tammy
Harrold, Greg & Shirley
Hearthwood Property Owners
Association
Hoellerich, Daniel & Lynn
Hunt, Jon & Kris
Kavemeier, Jim & Kathy
Kehart, Michael & Linda
Kohl, Kevin & Cori
Krueger, Ken & Mary
Kujak, David
Larsen, John & Theresa
Lottig, Noah & Bryn
Mallery, Tuck
Marrinson, Ralph & Martha
McFarlane, Tim & Deborah
Moews, Douglas & Thelma
Molepske, Louis & Sue
Morrissey, Scott & Chris
Oppenheim, Alan & Margo
Orr Joanne
Paulson, Patti
Paulson, Richard
Redman, Adam
Rikkers, Fred & Linda
Schuette, Jay & Gretchen

Schuette, Rudie
Seramur Family Foundation
Shain, Paul & Suzy
Solberg, Trygve & Tula
Sperling, James
Stengl, Jim & Chris
Thompson, Patrick & Janet
Tomahawk Shores Owners Assoc Ltd
Vehrs, Don
Wanserski, David & Lorri
Warmka, Richard & Shirley
Watson, James

Fair Share Plus \$300-\$499

Anderson, Matt
Bateman, Bill & Marsha
Burbie, David & Trish
Chupita, Diane
Combs III, Earle & Virginia
Coriell, Gene & Chris
Cote, Roger & Fran
DeNamur, Steve & Mary
Dierberg, Jeff & Brigit
Drewke, Richard & Denise
Dure, Lisa
Dwyer, Marika
Egen, James & Mary
Elliott, Craig
Engler, Margaret
Filippo, Sam & Susan
Fisher, Russell & Chris
Forsberg, Bruce & Sheila
Fox Den Family Ltd Partnership
Gantz, James
Gazeley, Janis & Gail
Gelinas, Michel
Gerstner, Jeff & Dian
Hardel, Jeff & Jennifer
Harry, David
Hartwig, John & Mary
Hertz, Leslie
Hoehne, Faye
Hogan, Scott
Janssen, Greta
Johnson, Mark
Jones, Wendy
Kennedy, Kyle & Nikki
Kirschner, Dean & Barb
Kuettner, Allen & Karen
Malsack, Philip
McNamar, Pat & Marlys
Morlock Family
Nelson, Doug & Terri
Olson, Thomas & Nancy

Petersen, David & Carlene
Pokorny, Laddie & Evalyn
Redman, Benjamin
Rheinschmidt, Dave & Judie
Riveron, Dr. Fritz & Heide
Ross, Bill & Cindy
Smith, Laird & Nancy
Solem, Gerald & Jane
Taylor, Melanie
Troyer, Bryan & Jane
Van Asten, Michael
Van Ells, Chris & Doreen
Weldon, Robert & Carol
Willer, Kurt & Constance
Wotruba, Frederick
Wright MD, David
Yentz, Dr. Tom
Zirbel, Kenneth & Constance

Fair Share \$270

Bany, Stephen & Lynda
Bergman, Don & Bonnie
Bilik, John & Lisa
Bloom, John & Judith
Bortner, Rebecca
Clausen, Henrik
Converse, Patrick
Cooledge, Richard & Barbara
Correnti, James & Carol
Cote, Steven & Lynda
Crone, John & Linda
Dalton, Daniel & Sheila
Drummond, Gary
Faulks, Robert & Christine
Ferguson, Sue
Fowler, Jim & Susan
Gabby, William
Greenleaf, Sally
Groth, Gerald & Pat
Guisinger, Robert & Patti
Harding, Ann
Hodek, Morgan
Igoe Jr., Michael
Jenkins, Dave & Joy
Johnson, Todd & Ellen
Jones, Donald & Susan
Keele, Doug & Christy
Lesch, Donna
Lynch, Patrick and Gail
Lynch, Ross & Ruth
McCarthy, Patrick & Nora
McCorison, Kyle
McDonald Family
Meitus, Scott & Cathrine
Miller, Bob & Marjorie
Nicholson, Jim & Bow
Nisk, Ronald & Alice
Palmer, Sarah & Pete

Perina, Robert & Sarah
Pregont, Daniel
Priebe, Becky
Reed, Barbara
Rengel, Robert
Rich, Mark & Devra
Robinson, Delbert & Cathy
Saari, Robert
Schuette, Clark & Kathy
Schwantes, William &
Nanette
Scuglik, Jim & Betsy
Simenstad, Dr. David & Martha
Sloan, Raymond
Sobocinski, Michael & Sarah
Sonneland III, Arthur & Kay
Steiner, Kimberly
Sullivan, Joseph
Teter, Shane & Karen
Thalacker, Rick & Cyndi
Thiel, Eric & Julie
Vance, Hobey & Carol
Watkins, Clyde & Cheryl
Weddle, Andrew
Winchester, Brad
Winger, Kevin & Patti
Witte, Mark
Zanon, David
Zimmer, David & Patti

Affiliate \$1-\$269

Broomell, Dare & Mary
Connor, Eugene
Converse, Arlan & Marilyn
Fink, Brian
Forni, Annina
Gray, Tom
Hagnauer, E.F. & Julie
Hamel, Joseph & Ruth
Hansen, John & Carolyn
Hill, Jeffrey
Hillinger, Gwen
Klecker, Francis & Judith
Ladowski, Casey
Nichol, Pat & Jane Held
Nichols, Maureen
O'Connor, Todd
Oppenheim, Lindsey
Pagel, Keith
Rasich, Sue
Riesterer, Rick & Sherry
Rine, Gary & Sharon
Romanski, Roger & Pauline
Schilling, Tad & Julia
Stodola, James
Westgate Family

Spring 2022 In-Person TLA Meeting

*Calling all TLA
members and
property owners!*

TLA members and property owners on Tomahawk Lake are invited to a Spring 2022 In-Person Meeting!

Onterra, our lake consulting firm, was on Tomahawk Lake this past summer conducting in-depth research regarding all aquatic plants, including Eurasian Milfoil (EWM). They will be updating an Aquatic Plant Management Plan and ultimately, helping TLA and our lake community form a 5-year lake management plan which largely includes management of EWM.

All TLA members and non-members are encouraged to attend this meeting. Meeting date and details will be announced in the Spring newsletter and/or via a TLA email blast. A Zoom link will be included so out-of-town folks can participate.

This meeting is a time for you to learn and ask questions regarding the health of our lake and EWM specifically.

We are coming together as a community to protect our beloved lake, and your input and opinion is valued through-out the process.

EVENTS COMMITTEE NEWS

by Margo Oppenheim, Event Chairperson

The events committee had a busy summer hosting three events this year since we couldn't host most of our events in 2020 due to Covid. We would like to give a big shout out to all participants and volunteers for making it a successful summer.

Hermit Island Swim & Paddle Challenge

Seventy-nine swimmers and paddlers joined our thirty volunteers on a beautiful Saturday morning before the 4th of July. The weather and the water, being warm this year, led our participants to an enjoyable, fun



(L-R) Bill Schwantes, Julia Hirvela, Drew Burbie & Kat Bramley

morning getting a little exercise while catching up with old and new lake neighbors. Many neighbors purchased TLA merchandise and even without an entry fee we had contributions totaling \$3,620. Congratulations to this summer's winners Hermit Swimmer – Julia Hirvela, Male Swimmer – Drew Burbie, Female Swimmer – Kat Bramley, and Paddler – Bill Schwantes. Next year's swim and paddle challenge will commence on July 2nd.

Jazzy Jaunt!

Unfortunately, we were not able to undergo the boat parade due to the all-day rain we encountered. The weather was not any better on the rain date the next day. Twenty-seven participants bought thirty-three blankets plus donations of \$450 totaling a profit of \$2,100. Save your sunflower decorations and we will try to organize the Sunflower Jazzy Jaunt Boat Parade once again in the future.

SIP & BID

What a fun event, plus we raised approximately \$8,000!! Thank you to John & Kim Griffin for opening their lovely home for the party. It was a perfect day to savor the delectable hors d'oeuvres provided by Julie Kay's Kitchen and sipping on a cocktail while conversing with lake friends and meeting new lake residents. Many local merchants and friends of Tomahawk Lake donated a wide assortment of unique gifts, which brought



in a hefty donation to our fundraising efforts that we greatly appreciate. The caterer is booked for next year on **August 6. To hold that date, we must find a venue.**

We look forward to a host offering up their home as the site for this popular event! It's an easy party to host, because the Events Committee organizes and sets everything up for you!



Thank You!!

Thank you to the following businesses and friends for your generous donations for our Sip & Bid silent auction: Anthony's Ristorante, Ann Marie's, Arbor Vitae Marine, Bitters & Bull, Deer Run Stone, Sarah & Mick Desmond, Jeff & Birgit Dierberg, Earth Goods, ETCO Electrical Supply, John & Kim Griffin, Bruce & Kyle Gruening, Golden Karat, Tom Gray, Green Hydrangea, Head Games, J.J.'s Acres, J. Christy's, J.J.'s Sports, Joy Ride, Kyle & Nikki Kennedy, Kurt's Island Sports, Lake Tomahawk Meat Market, Lakeland Hardware, Lakeside Rentals & Storage, Ross & Ruth Lynch, Minocqua Lakeside Grill, Minocqua Yacht Club, Louis Molepske Jr., No Sweat Clothing, North Fork Fin & Filet, Northern Waters Distillery, Tom & Nancy Olson, Alan & Margo Oppenheim, Lindsey Oppenheim, Adam & Melissa Redman, Redman & Gelinas Eye Wear, Redman Realty Group, Ross Sportswear, Shamrock, Smiley's, Frank Springer, The Shade Tree, Trig's Grocery Store, Trig's Cellar 70, and White Arrows Home.



W I S C O N S I N

Hazelhurst • Lake Tomahawk • Minocqua • Woodruff

Tomahawk Lake Association
P.O. Box 535, Minocqua, WI 54548

Update your contact information

Email Cindy Ross at crosscpa@yahoo.com to update any information. We need to keep you up to date on happenings around Tomahawk Lake. *Thanks!*

Complete a Survey before the end of 2021 *Regarding Tomahawk Lake and Aquatic Plant Management*

We want to hear from you! Keep your eyes peeled for a postcard! It will direct you to an online survey about Tomahawk Lake and Aquatic Plant Management. It will go to all Tomahawk Lake property owners (*the survey will be sent to the same contact and address as listed on the property's real estate tax bill*). This is your opportunity to be heard regarding your recreational use of the lake(s), Eurasian Water Milfoil management methods, and your perceptions of the overall health of the Tomahawk Lake System. Read below for more details regarding this survey.

As some of you know, Onterra, our lake consulting firm, is updating the Tomahawk Lake System Aquatic Plant Management Plan (APM). This plan presents data about the aquatic native and invasive plant communities and the water quality of Tomahawk Lake. Based on this data and information, the

plan provides goals and strategies to monitor and manage aquatic plants in the lake. This encompasses preservation of native species, managing invasive aquatic plants (EWM), and reducing/preventing the establishment of other aquatic invasive species in our lake system.

An important aspect in the development of an effective lake management plan is the **input of the people who use and care for the lake**. This survey will give you the opportunity to express your views and concerns. The results of the survey will be incorporated into an updated Aquatic Plant Management Plan that will help shape how our lake is managed.

The survey is designed to be easy to understand and complete. All answers and comments remain anonymous. The survey results will be collected by a third party.

Board of Directors Meeting - Everyone Welcome!

Anyone and everyone are **encouraged** and **welcome** to attend any Board Meeting they wish all year long.

We meet at 8:30 a.m. on the following 2022 dates:

January 22
February 19
March 19
April 23
May 21
June 18
July 23
August 20
September 24
October 22
December 3

Please text or call TLA President Noah Lottig the week before for location: 218-310-7460.